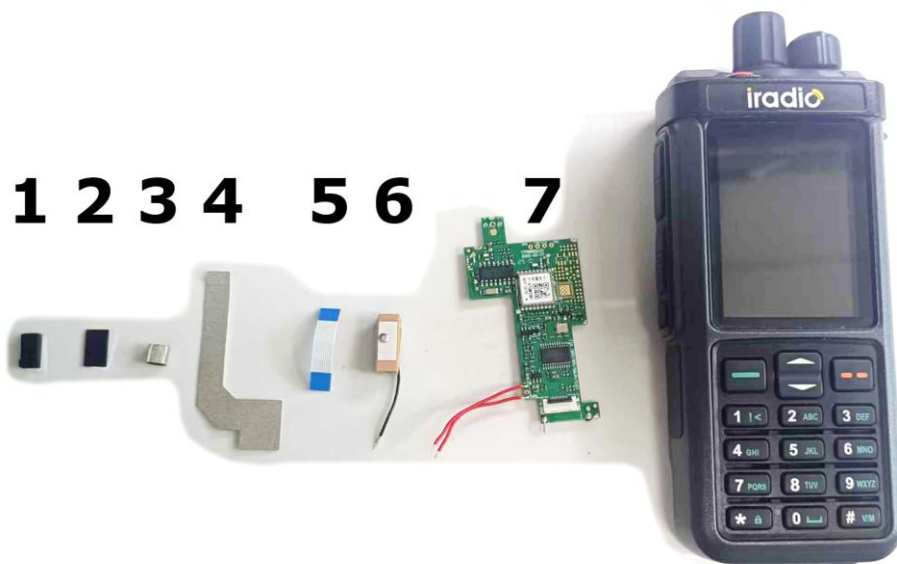


Iradio UV98 PLUS Extended GPS Function Description

www.mobimax.bg

1. Material preparation: ① Fixing foam; ② Insulating paper; ③ Grounding conductive foam; ④ Conductive shielding fabric ⑤FFC connection flexible flat cable 25mm; ⑥GPS ceramic active antenna ⑦GPS expansion board ⑧ Walkie-talkie main unit



2. After removing the volume knob and the antenna cap, remove the fixing nuts of the antenna and the volume knob;



3. Remove the screws that fix the rear shell;



www.mobimax.bg

4. Remove the screws that fix the front and rear of the aluminum shell;



5. After the face shell and the aluminum shell are separated, slowly pull out the aluminum shell;



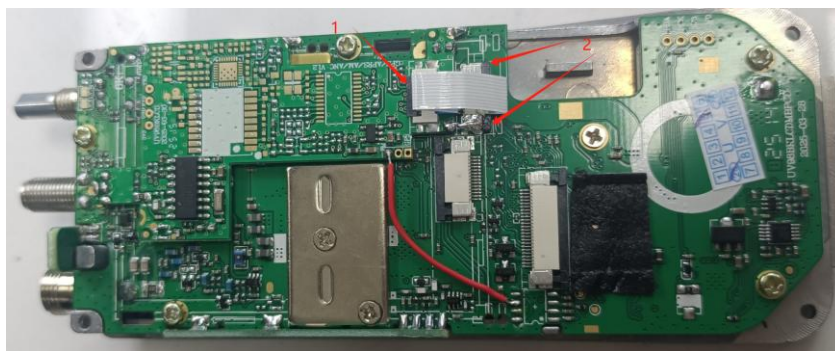
6. ① Unplug the TYPE-C charging ribbon cable; ② Weld the grounding wire welding point with ferrochrome. ③ Then, use tweezers to gently push out the ears on both sides of the FPC power socket, pull out the keyboard and connect the flexible power cable.



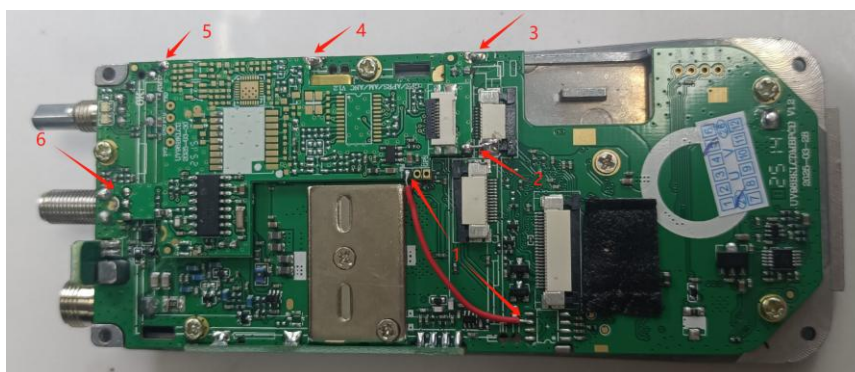
7. ①②After using tweezers to remove the hooks on both sides of the display screen stand,③ use tweezers to gently push out the ears on both sides of the FPC socket and gently pull out the flexible cable of the display screen.



8. ①The tweezers lift the flip cover of the FPC row seat on the expansion board and pull out the end connected to the flexible flat cable. ②Then, use tweezers to gently push the ears on both sides of the FPC socket of the motherboard outward, pull out the connection end of the flexible flat cable, and remove 35mm of the FFC connection flexible flat cable from the other end.



9. ①Solder the electronic connection wires of the expansion board with ferrochrome; ②③④⑤Then use chromite welding to remove the fixed welding points of the expansion plate; ⑥Then, solder the AM antenna head and the socket pads of the expansion board with ferrochrome. Remove the expansion board and solder the excess tin slag on the surface with ferrochrome;



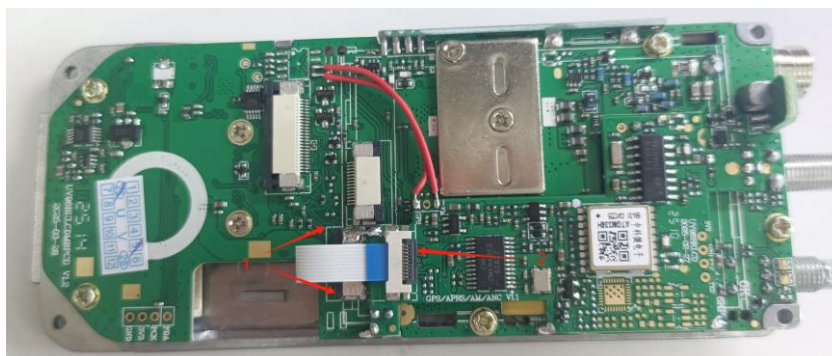
10. Install the expansion board with GPS function into the corresponding position, ①First, fix a point when welding with ferrochrome. Then, adjust the position of the expansion plate to ensure it does not extend beyond the aluminum shell; ②③④⑤use ferrochrome to weld the fixed solder joints of the expansion plate well;



11. ①Solder the AM antenna head and the socket pad with ferrochrome; ②③Then solder the electronic connection wires of the expansion board onto the application pads of the main board. Be careful not to weld in reverse, short-circuit or falsely weld;



12. ①Gently push the two ears of the FPC socket on the motherboard outward with tweezers, insert one end of the FFC connection flexible flat cable (pay attention to the direction), and then use tweezers to push the two ears of the FPC socket inward to press the flat cable tightly to prevent it from loosening; ②Lift the flip cover of the FPC row seat on the expansion board, insert it into the other end of the FFC connection flexible flat cable, and then press the flip cover tightly against the flat cable to prevent it from loosening. Pay attention to checking whether the ribbon cables are inserted askew or not inserted properly.



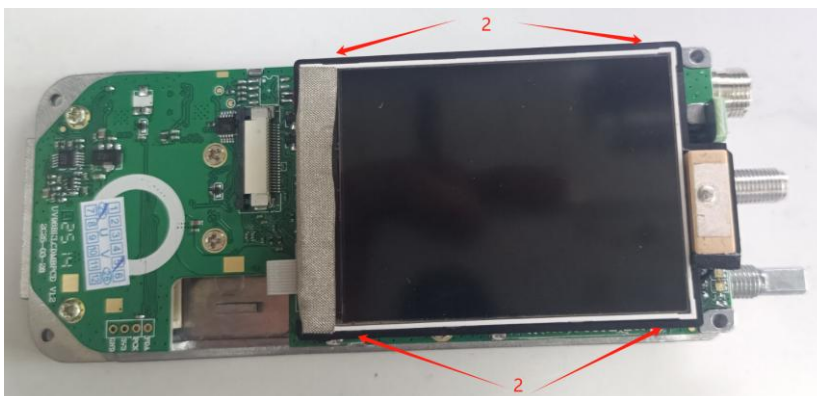
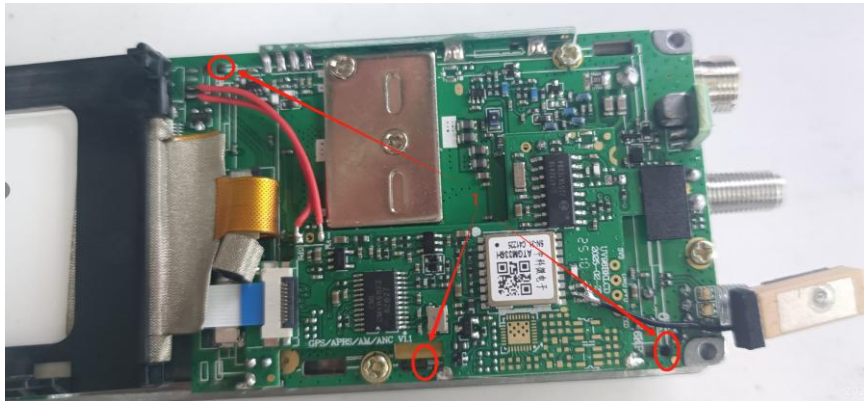
13. ①When welding the RF coaxial cable of the GPS ceramic active antenna, pay attention to the welding speed. The ground wire should not be short-circuited or falsely welded. If the welding is not good, the GPS signal received later will be poor or no satellite will be received; ②Fix the foam on the side of the GPS antenna; ③Insulating paper is attached to the AM antenna head of the expansion board and the pad of the row seat to prevent short circuit with the GPS antenna;



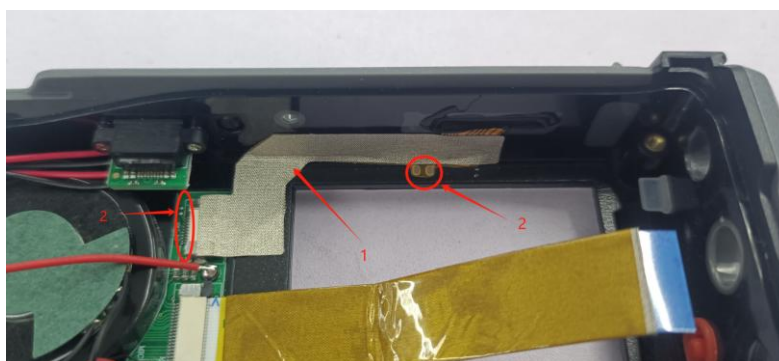
14. ①Gently push the ears on both sides of the FPC socket of the motherboard outward with tweezers, insert the display screen flexible ribbon cable (pay attention to the direction), and then use tweezers to push the ears on both sides of the FPC socket inward to press the ribbon cable tightly to prevent it from loosening. ②The grounding conductive foam (pay attention to the direction) should be attached to the grounding solder joint of the expansion board. Do not attach a short circuit; ③The GPS antenna is strung up from the slot hole of the display screen bracket and fixedly installed in the antenna slot of the bracket. Pay attention to checking whether the ribbon cables are inserted askew or not inserted properly.



15. ①Insert the positioning hole of the display screen bracket into the corresponding round hole of the main board on the right. Do not install it incorrectly, otherwise the display screen may be crushed when installing the face shell later; ②And place the ③ display flexible flat cable, electronic connection cable and GPS antenna RF coaxial cable under the display stand properly to prevent problems such as short circuits due to pressing or bumping. Then, press the four corners of the display stand with your fingers and insert it into the motherboard holes. The stand will hold the motherboard and will not move. Check that the stand is installed in place after four weeks. Be careful not to press the display screen with your hands to prevent it from cracking or showing gray or distorted screens.



16. ①Align the conductive shielding cloth with half of the FPC socket on the keyboard board and start pasting along the flexible flat cable tape of the earphone PCB to prevent electromagnetic interference; ②Be careful not to short-circuit the FPC pin and the MIC microphone pad.



17. ①Gently push the ears on both sides of the FPC power socket of the motherboard outward with tweezers, insert the keyboard connection flexible power cable (pay attention to the direction), and then use tweezers to push the ears on both sides of the FPC power socket inward to press the power cable tightly to prevent it from loosening.

②Weld the grounding wire with ferrochrome;

③Insert the TYPE-C charging ribbon cable into the charging socket again;

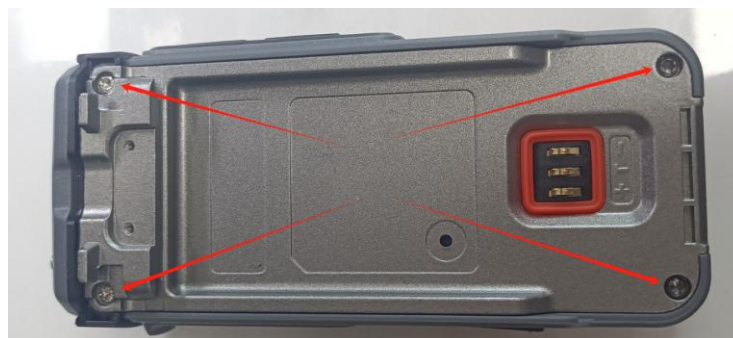
Pay attention to checking whether the ribbon cables are inserted askew or not inserted properly.



18. Insert the aluminum shell at an Angle of about 30 degrees into the face shell, and place the keyboard flexible flat cable, grounding wire and charging flat cable inside properly to prevent them from being pressed after the shell is installed. Before packing the case, make sure to clean the dust off the surface of the display screen and the lenses first.



19. Tighten the screws at the front and back of the fixed aluminum shell, Before locking the screws, check if there is any key jamming on the side buttons. If there is, the machine at the back cannot be turned on.



20. Tighten and fix the screws of the rear shell;



21. Install the antenna, the volume knob fixing nut and lock it, Install the volume knob and antenna cap again;



МАГАЗИН СЕРВИЗ МОБИМАКС ООД

- Телефон за поръчки:

[0700 11 497](tel:070011497)

Търговски отдел:

GSM: [+359898667727](tel:+359898667727) GSM: [+359899930303](tel:+359899930303) Телефон: [+35966801688](tel:+35966801688)

Сервизен център :

Телефон: [+35966804963](tel:+35966804963)

GSM: [+359899190580](tel:+359899190580)

Имейл: servicegb@mobimax.bg

Адрес: Габрово 5300, ул. Шипка 9

Имейл: info@mobimax.bg Уеб адрес: www.mobimax.bg